



Services To Business News

Issue 5 > May 06

Keeping you up to date with developments at Plumpton College

The Sussex Rural Activities Forum

The Business Management Team are in the final stages of planning a repeat of our highly successful Sussex Rural Activities Forum.

Last year Plumpton College and the Learning and Skills Council identified a need for an information gathering and networking seminar for organisations involved in rural training advice and guidance. The focus was on “*How do people get the skills they need to enable rural economies to flourish?*”

Due to popular demand we are repeating this event on **Friday 27 October** and extending the invitation to rural businesses.

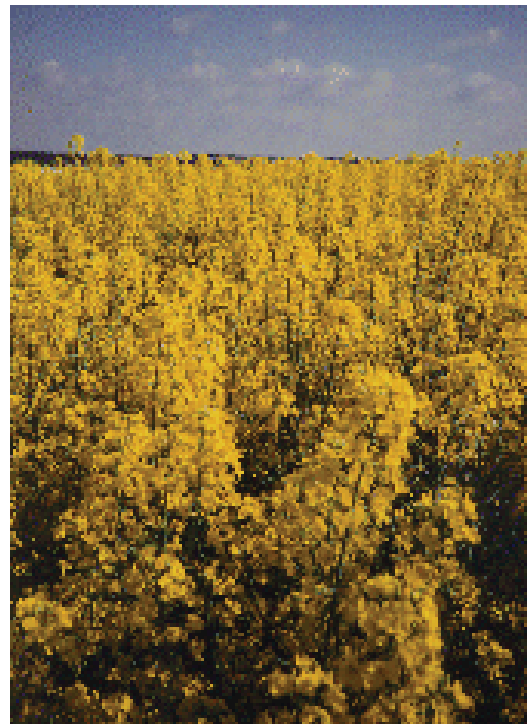
For more information please contact Don Cranfield 01273 892031 or Liz Moyle 01273 892021

Biofuels – Potential for Diversification?

Plumpton College recently hosted a well-attended workshop on the hot topic of Biofuels, and the potential to increase margins on oil seed rape. The speakers included Andrew Martin, Regional Champion for Combinable Crops, and Mat Bulba, of Brighton based Blooming Futures.

The workshop explored the economics of growing oil seed rape for processing into biofuels and highlighted Biodiesel and Pure Plant Oil (PPO), comparing products and environmental impacts of production and processing. The message was that growing oil crops for local markets and collaborating to produce biofuels on a local scale appeared to be the most sustainable way forward. Although vehicles have to be modified to run on PPO, it is cold-pressed and is a simple process, while the production of biodiesel requires chemicals and large amounts of water. PPO has been used successfully in Germany for more than 10 years but until now little has been known of the technology in the UK.

Blooming Futures, a not-for-profit organisation, is converting 50 vehicles to run on PPO and the College has had one of their cars, a VW Golf, converted. There will be a need to supply the fuel for the first 50 vehicles and the College is in early discussions with Blooming Futures regarding setting up a press to satisfy this demand.



Professional Development



Bespoke Training

Businesses are increasingly identifying training needs that are specific to their organisations. In addition to our published courses, Plumpton frequently tailors training to meet the needs in a range of areas such as machinery, forestry and horticulture.

Hard Landscaping

Over the past few months we have run several successful one day courses in Hard Landscaping. Subjects covered have included Paving, Block Paving and Working with Timber.

Comments: *“Wonderful fun, interesting, very practical, great! Thank you.”*

Kathy Flower - Bricklaying course



Flint Work:

24th June 2006: Tuition Fee £80

An introduction to using flint when hard landscaping

Garden Design Day

Saturday July 8th 2006

Why not treat yourself or a friend or member of the family to a memorable day out on a Garden Design Day at Plumpton College?

It can be the first step to creating a beautiful garden. The day will include lunch and a trip to visit a local garden with expert guidance from garden designer Nigel Philips.



WSET Intermediate Certificate in Wines, Spirits & Other Alcoholic Beverages

This course is designed for people who wish to work within drinks related industries. Topics include basic tasting techniques, wine production, sparkling and fortified wines, spirits and liqueurs.

10th – 13th July 2006

Tuition Fee: £250.00 including wines and studies materials

This course is a pre-requisite for the Foundation Degree in Wine Production and Business Management

If you would like to book onto a part time course, please contact
The Professional Development Office
01273 892 052 or 01273 892 031



Sports Centre of Vocational Excellence



It is just two years since Plumpton extended its activities into Outdoor Education.

In its first year the Sports Department introduced the First and National Diplomas in Sport (Outdoor Education), a comprehensive one or two year course respectively, covering a wide range of skills from developing expedition organisation and leadership skills to orienteering, climbing and land based/water based outdoor skills.

We also offered a full time Bushcraft Leadership Programme designed to work towards the NCFE Advanced Certificate in Professional Development for the outdoor industry.

In future the college will expand its provision to cover a Foundation Degree in Sport (Outdoor Education), providing successful students with the opportunity to continue to study at a higher level or to look into employment opportunities in the leisure or outdoor industries.

Shorter courses include the Mountain Leaders, Basic Expedition Leaders Award, and the Award in Community Sport Leadership. We have also introduced courses for the Mountain Bike Leadership Award and Site Specific Climbing Award.

The CoVE (run in partnership with Sussex Downs, Chichester and Collyers Colleges) helps us to continue this expansion and we plan to offer NVQ level 2 and 3 courses in September 2006 to help further meet the needs of industry. We have a climbing wall which is available for hire and we use the Adur Activity Centre, Ardingly Sailing Centre and Bewl Water for Sailing and High Rocks Tunbridge Wells for outdoor climbing.

As we write, some of our students are about to sample white water rafting in Wales and have also been able to take part in a ski trip to Austria, and camps on Dartmoor and in the Wye Valley.

To help in this developing area our new Head of Sports, Ivor Lewis has joined us from World Expeditions; *"I look forward to developing the Sports provision further at Plumpton and helping to train future professionals for our industry"*





Apprenticeships

Work Based Learning

Employer Contributions towards Apprenticeship Training

From September 2006 Employers will need to contribute to the fees for Apprentices who are over 19 years of age.

Why?

The Government through the Learning & Skills Council need employers to contribute towards the cost of training their workforce and in doing so have reduced the amount of funding for learners between the ages of 19-24.

As an introductory offer we are charging all employers who would like one of their employees to enter training that are aged 19-24 the same advertised fee in the Part Time prospectus as the NVQ only.

e.g. If a 20 year old wants to do Floristry at level 2 they will be offered the Apprenticeship and all the extra benefits it offers for the same price as the NVQ Level 2 only.

Match Point

If you would like to become a Work-Based Learning Employer, please complete the following checklist:

- Can you provide a full range of work experience in your occupational area including some formal 'on the job training'?
- Do you need to train a young person to fill a skills gap in your workforce or for future expansion of your organisation?
- Does your workplace comply with all current Health and Safety regulations? (We can offer advice in this area.)
- Would you be prepared to let your apprentice attend college and support them in their gathering of evidence of their skills?

To find out how you can be involved contact Work Based Learning:

www.plumpton.ac.uk 01273-892050 wbl@plumpton.ac.uk

OWNERS

RUPERT BAMFORD & SCOTT FRASER

**APPRENTICE
AARON KINVIG**

**COURSE
APPRENTICESHIP IN TREES AND
TIMBER**



(from left to right: Scott, Aaron & Rupert)

Bamford Fraser Tree Management Ltd was established in 1996, and provides a quality arboricultural and forestry contracting and consulting service to a mainly private client base.

Rupert & Scott met whilst at Wye College, on the Landscape Ecology MSc, and prior to this Scott served an informal apprenticeship with a local tree contractor.

Since 2004 Bamford Fraser have enjoyed supporting Plumpton College by offering work placements to Higher National Diploma (HND) Arboriculture learners.



When the Trees and Timber Apprenticeship was launched they considered it would be beneficial to the business to include an Apprentice, and hoped it would be possible to build the essential practical skills more rapidly than day release would allow.

Scott is a Lantra Awards Instructor and a National Proficiency Test Committee (NPTC) Assessor, and has become less 'hands on' due to his recently formed training business requiring him to spend more time away from the core team.



Apprenticeships offer the scope for employers to tailor programmes to meet their business needs and offer a good alternative to the more academic courses available. This is especially relevant with recent industry disquiet over a proliferation of certificate of competence. Employers can mould and shape the employee to suit their organisation but this requires effort.

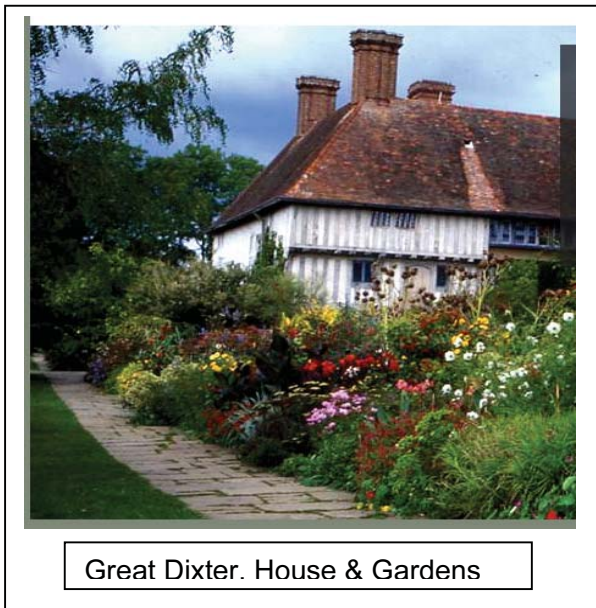
Aaron joined Bamford Fraser in September 2005 and the work has provided the outdoor and challenging experience he was looking for.

Aaron has already completed CS30 and will soon take CS38 to allow him to widen his climbing experience, and hopefully fulfil his aspiration to take on more of the technical work.

Aaron is able to gain experience participating in tree work with a commercial employer whilst witnessing first hand the difficulties a business needs to overcome to remain viable.

Free Training* for Sussex-based Horticultural Businesses and their Employees *subject to eligibility and availability

Plumpton College is leading a pan-Sussex ESF project which has already benefited over forty rurally-based, horticultural businesses with provision of free training needs analysis and free attendance on over 150 courses.



Great Dixter. House & Gardens

Great Dixter the world famous house and gardens of Christopher Lloyd was one of the first businesses to join the project in November 2005. It was a time of great change and development for the Great Dixter team. The free training opportunities available through the Root Connections project were timely and well received. A number of staff benefited from the training which included Marketing for Rural Business, Supervisory Skills, Manual Handling and First Aid. Perry Rodriguez, Great Dixter's Business Manager said *"the training programme, was not only tailor made for our needs but it didn't put another financial burden on the business. Ann Brigden the Project Manager at Plumpton saw to it that our courses were well organised and I would recommend that businesses should seize the opportunity"*.

Wyevale Grounds Maintenance, based at Ringmer, joined the project at the start of 2006. The company contacted Plumpton College as it acknowledged the importance of staff training in ensuring that company standards are maintained. Wyevale also realized that training is key to business development as well as staff development.

During our company training needs analysis visit the College identified training for over 30 members of staff. Courses such as Plant Knowledge, Tractor & Trailer Handling, Supervisory Skills and Time Management were amongst those requested. Some of the training identified was not "off the shelf" as it directly related to the contract work that Wyevale Grounds

Excellent Facilities to Hire at Plumpton

The Sussex Rural Business Centre

The Sussex Rural Business Centre is set in an idyllic location, facing the South Downs in the heart of the Plumpton College Estate.

This training centre is fully equipped with state of the art facilities and is dedicated to supporting Rural Enterprise

We offer facilities for Conferences, Seminars, Training Courses or Staff Away Days.

Here at Plumpton not only do we have excellent training facilities but we can also arrange activities such as wine tasting, farm visits and team building activities.

For more information
contact Liz Moyle 01273 892021
or email liz.moyle@plumpton.ac.uk

Maintenance undertake for Lewes District Council. In response, the College arranged for an industry specialist trainer to liaise with Wyevale to develop a bespoke course for them that covered all the required areas of skills development. The training attendance was welcomed by Lewes District Council who were pleased to support Wyevale's request to have the training based in their gardens and grounds.

Whist more training was requested than the Root Connections project could deliver free of charge, the College was also able to develop a programme and so organise the full range of training requested by the company. This provided a convenient "one-stop shop" service.

Wyevale Grounds Maintenance found the Root Connections courses so useful that they subsequently purchased identical courses for more of their staff. Those courses not provided through the Root Connections project were delivered through the College's Horticultural Technologies CoVE initiative.

Colin Lennox, Wyevale Grounds Maintenance, Regional Manager said *"We were delighted with the training we received from the Root Connections project and Plumpton College. Our staff appreciated the practical approach of the instructors and as well as improving their skills they thoroughly enjoyed the experience. Even those who have been doing the job for years came away a little wiser! We will certainly be using the College again for future training"*

For further information please contact:-

Ann Brigden, Project Manager on 01273 890454 ext 300



Plant Knowledge trainer, Chris Whitelock (centre) with Wyevale Grounds Maintenance staff.

**TOURISM
SOUTH EAST**

We would like to invite you to.....

Brunch On The Hoof

Tourism South East in conjunction with **TROT –Toll Rides (Off-Road) Trust** are hosting a series of seminars in the South East.

The First of the seminars are being held at
Plumpton College on the **19 May 2006** at **10am**

Promoting Equestrian Tourism

Permitting equestrian access on your land can be highly lucrative and advantageous to your farm business – Opening the door to a range of exciting opportunities. Maximising the income potential of these opportunities is the theme of these seminars.

A number of key speakers will be in attendance, highlighting the numerous opportunities open to farmers and landowners.

A complimentary brunch will be provided

**For more information and to book your place please call Kadiya at TROT on 01622 735599
Or email kadiya@tollrides.org.uk**

TROT
TollRides(Off-Road)Trust

Horticultural CoVE Update

The awarding of a Horticultural Technologies CoVE at Plumpton has enabled us to improve our provision of specialised courses to business including managers of parks and private gardens, National Trust properties and estates, greenkeepers and urban greenspace employers.

The CoVE was developed in conjunction with Brinsbury campus Chichester College and Writtle College. This partnership approach enables both staff and students to benefit from the facilities at the other centres and draw on the expertise of relevant staff.

We have extended our accommodation, here at Plumpton, with a new horticultural technologies building which is in the final stages of completion. The facility has provided new classrooms, a floristry suite and an undercover area for developing horticultural technologies.

Courses tailored to individual employers needs have been delivered to many work providers throughout the south-east. For example we are currently working with Brighton University, 1066 Housing Association and Crawley Borough Council.

Whatever your training requirements Plumpton College will be pleased to discuss them with you, **please telephone David Blackmur on 01273 892044** or via email david.blackmur@plumpton.ac.uk



**Specialist Machinery training,
an example of bespoke courses we can offer you.**

